

S-CLASS VESSELS

VESSEL NAME	AAL FREMANTLE	AAL DAMPIER	AAL NANJING	AAL BANGKOK
YEAR BUILT	2011	2011	2012	2012
IMO NO.	9521095	9521540	9521552	9521564
CALL SIGN	9V9011	9V9012	9V9013	9V9014
FLAG	SINGAPORE	SINGAPORE	SINGAPORE	SINGAPORE



powered by partnerships

Type	Multipurpose/Heavy Lift Carrier/Strengthened for Bulk	Container Capacity (Total TEU)	969 TEU
Class	Germanischer Lloyd + 100 A5, Multipurpose Dry Cargo Ship, Equipped for Carriage of Containers, Strengthened for Heavy Cargo, G, NAV-O, IW, DG, BWM, EP, DBC, + MC E AUT Fitted for Panama, Suez, Australia, US Coast Guard	Container Capacity (Total FEU) Reefer Containers	461 FEU + 46 TEU 50 Reefer Points on Deck with Reefer Monitoring System in Cargo Office
Deadweight GRT/NRT	18,762 mt 14,053 / 5,373	Cargo Gear	Crane 1 & 2 (Port Side): 350 mt at 14.50 m / 140 mt at 32.00 m Combined 700 mt (Crane 1 & 2)
LOA	148.50 m	Maximum Lift	
LBP	140.30 m	Main Engine	Wartsila 6RTA 48-B MCR: 8,730 kW at 127 RPM CSR: 7,857 kW at 122.6 RPM
Breadth (Moulded)	23.40 m	Auxiliary Engines (3 Sets)	MAN Hyundai 5L23/30H 645 kW at 720 RPM
Depth (Moulded)	13.50 m	Bow Thruster Rated Power	700 kW
Draft (Summer)	9.80 m	Anti-Heeling System	The vessel is equipped with anti-heeling tanks, with an automatic system fully monitored and controlled from the wheelhouse, cargo office and the ECR.
Holds	3	Dehumidifiers / Ventilation	Ventilation of holds is in accordance with requirements for carriage of dangerous cargo.
Hatches	3	Dangerous Cargo	In No. 1 Cargo Hold: Class 1.1 ~ 1.6, 1.4(S), 2, 3, 4.1, 4.2, 4.3, 5.1, 6.1, 8, 9 in package form. Class 4.1, 4.2, 5.1, 6.1, 7, 8, 9 in solid bulk form.
Tweendecks	1 Tweendeck - 3 Positions		
Hatch Dimensions (L x B)	No. 1: 6.30 x 10.50 m No. 2: 25.90 x 18.00 m No. 3: 52.50 x 18.00 m		
Cargo Capacity (Grain/Bale)	No. 1: 662.60 cbm No. 2: 6,032.10 cbm No. 3: 13,321.40 cbm		
Total	20,016.10 cbm		
Floor Space	Tank Top: 1,377 m2 Tween Deck: 1,411 m2 + Additional 66 m2 of 20FT F/L Deck Weather Deck: 1,584 m2		
Max. Permissible Load	Weather Deck Hatch Covers: 3.00 mt/m2 Tween Deck Hatch Covers: 4.00 mt/m2 Tank Top: 22.00 mt/m2	Smoke Detection / Fire Fighting	All cargo holds are equipped with a fire detection and a CO2 fire extinguishing system. Cargo hold No. 1 is additionally equipped with a sprinkler fire extinguishing system.

AAL's growing operating fleet of modern, multipurpose and heavy lift vessels is the market's youngest. Featuring 7 highly flexible classes of MPP vessels, it proudly serves the global transportation demands of our diverse customer base through both our Liner Services and Tramp & Projects divisions.



AAL Headquarters:

Singapore

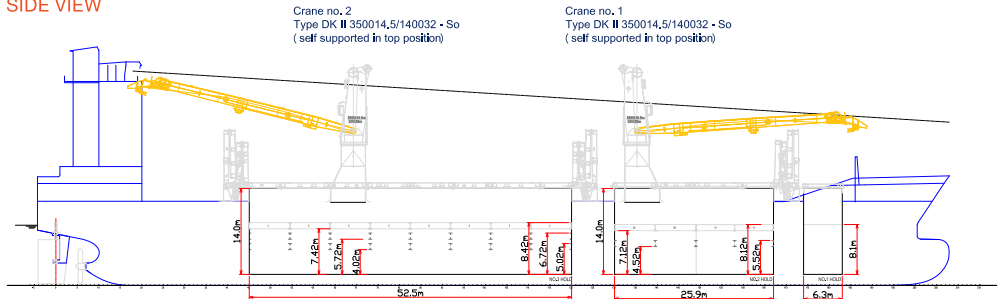
T: (65) 6248 3600

E: sales.sg@aalshipping.com

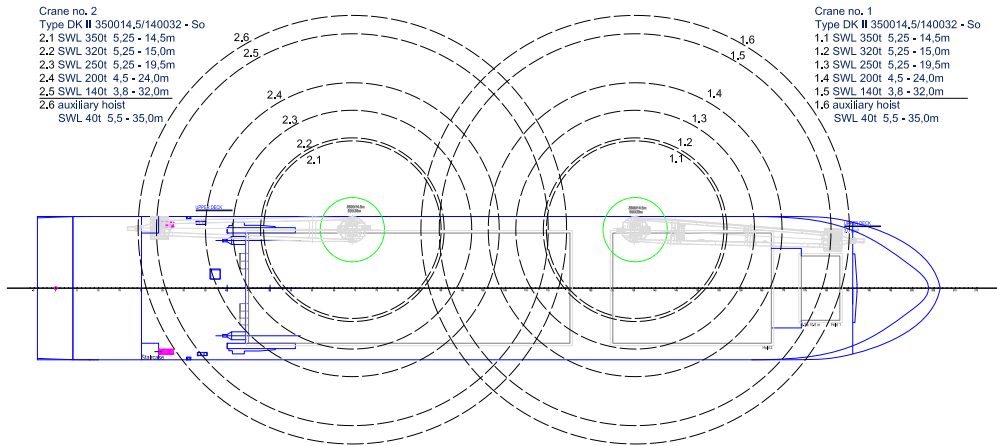
www.aalshipping.com

S-CLASS VESSELS

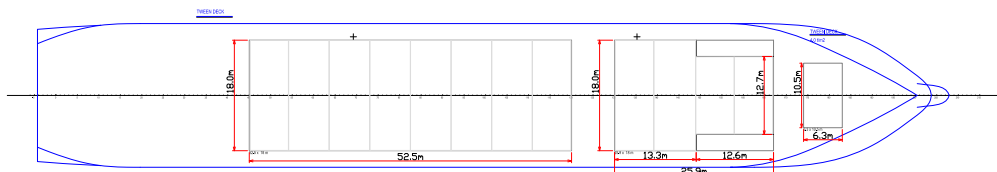
SIDE VIEW



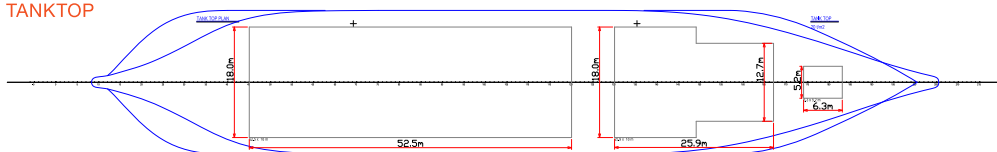
WEATHER DECK



TWEENDECK



TANKTOP



powered by partnerships

These owned, best-in-class vessels have been designed and equipped to accommodate heavy lift and project cargo, alongside breakbulk and dry bulk. Their side mounted cranes have a combined lifting capacity of 700 mt – ideal for loading and stowing heavy and oversized project cargo. They further feature long and highly flexible cargo holds, equipped with adjustable tween-decks and strengthened tank tops.



All vessel details are provided in good faith at time of printing, but are subject to change. Please check with your AAL Representative, or visit www.aalshipping.com, for all latest updates.

AAL Headquarters:
Singapore
T: (65) 6248 3600
E: sales.sg@aalshipping.com
For a complete listing of current AAL offices and associates around the world, visit www.aalshipping.com