

# S-CLASS VESSELS



powered by partnerships

VESSEL NAME	AAL BANGKOK	AAL DAMPIER	AAL FREMANTLE	AAL NANJING
YEAR BUILT	2012	2011	2011	2012
IMO NO.	9521564	9521540	9521095	9521552
CALL SIGN	9V9014	9V9012	9V9011	9V9013
FLAG	LIBERIA	LIBERIA	LIBERIA	LIBERIA

<b>Type</b>	Multipurpose/Heavy Lift Carrier/Strengthened for Bulk	<b>Container Capacity (Total TEU)</b>	969 TEU
<b>Class</b>	Germanischer Lloyd + 100 A5, Multipurpose Dry Cargo Ship, Equipped for Carriage of Containers, Strengthened for Heavy Cargo, G, NAV-O, IW, DG, BWM, EP, DBC, + MC E AUT  Fitted for Panama, Suez, Australia, US Coast Guard	<b>Container Capacity (Total FEU)</b> <b>Reefer Containers</b>	461 FEU + 46 TEU  50 Reefer Points on Deck with Reefer Monitoring System in Cargo Office
<b>Deadweight GRT/NRT</b>	18,762 mt 14,053 / 5,373	<b>Cargo Gear</b>	Crane 1 & 2 (Port Side): 350 mt at 14.50 m / 140 mt at 32.00 m Combined 700 mt (Crane 1 & 2)
<b>LOA</b>	148.50 m	<b>Maximum Lift</b>	
<b>LBP</b>	140.30 m	<b>Main Engine</b>	Wartsila 6RTA 48-B MCR: 8,730 kW at 127 RPM CSR: 7,857 kW at 122.6 RPM
<b>Breadth (Moulded)</b>	23.40 m	<b>Auxiliary Engines (3 Sets)</b>	MAN Hyundai 5L23/30H 645 kW at 720 RPM
<b>Depth (Moulded)</b>	13.50 m	<b>Bow Thruster Rated Power</b>	700 kW
<b>Draft (Summer)</b>	9.80 m	<b>Anti-Heeling System</b>	The vessel is equipped with anti-healing tanks, with an automatic system fully monitored and controlled from the wheelhouse, cargo office and the ECR.
<b>Holds</b>	3	<b>Dehumidifiers / Ventilation</b>	Ventilation of holds is in accordance with requirements for carriage of dangerous cargo.
<b>Hatches</b>	3	<b>Dangerous Cargo</b>	In No. 1 Cargo Hold: Class 1.1 ~ 1.6, 1.4(S), 2, 3, 4.1, 4.2, 4.3, 5.1, 6.1, 8, 9 in package form. Class 4.1, 4.2, 5.1, 6.1, 7, 8, 9 in solid bulk form.  In No. 2 and No. 3 Cargo Hold: Class 1.4(S), 2.2, 2.3, 3 (FP ≥ 23°C - ≤ 61°C), 6.1 (liquids) and 8 in packaged form. Class 4.1, 4.2, 4.3, 5.1, 6.1 9(liquids FP ≥ 23°C - ≤ 61°C), 6.1(solids), 8(liquids) FP ≥ 23°C - ≤ 61°C) and 9 in closed freight containers.  On Hatch Covers above No. 2 and No. 3 Cargo Holds: Class 1.1 ~ 1.6, 1.4(S), 2, 3, 4.1, 4.2, 4.3, 5.1, 6.1, 8, 9 in containerized packaged form or in closed freight containers.
<b>Tweendecks</b>	1 Tweendeck - 3 Positions	<b>Smoke Detection / Fire Fighting</b>	All cargo holds are equipped with a fire detection and a CO2 fire extinguishing system. Cargo hold No. 1 is additionally equipped with a sprinkler fire extinguishing system.
<b>Hatch Dimensions (L x B)</b>	No. 1: 6.30 x 10.50 m No. 2: 25.90 x 18.00 m No. 3: 52.50 x 18.00 m		
<b>Cargo Capacity (Grain/Bale)</b>	No. 1: 662.60 cbm No. 2: 6,032.10 cbm No. 3: 13,321.40 cbm		
<b>Total</b>	20,016.10 cbm		
<b>Floor Space</b>	Tank Top: 1,377 m2 Tween Deck: 1,411 m2 + Additional 66 m2 of 20FT F/L Deck Weather Deck: 1,584 m2		
<b>Max. Permissible Load</b>	Weather Deck Hatch Covers: 3.00 mt/m2 Tween Deck Hatch Covers: 4.00 mt/m2 Tank Top: 22.00 mt/m2		

AAL's growing operating fleet of modern, multipurpose and heavy lift vessels is the market's youngest. Featuring 7 highly flexible classes of MPP vessels, it proudly serves the global transportation demands of our diverse customer base through both our Liner Services and Tramp & Projects divisions.



AAL Headquarters:

Singapore

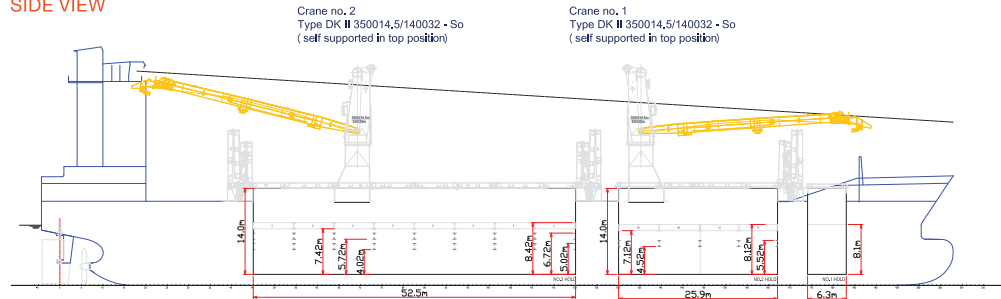
T: (65) 6248 3600

E: sales.sg@aalshipping.com

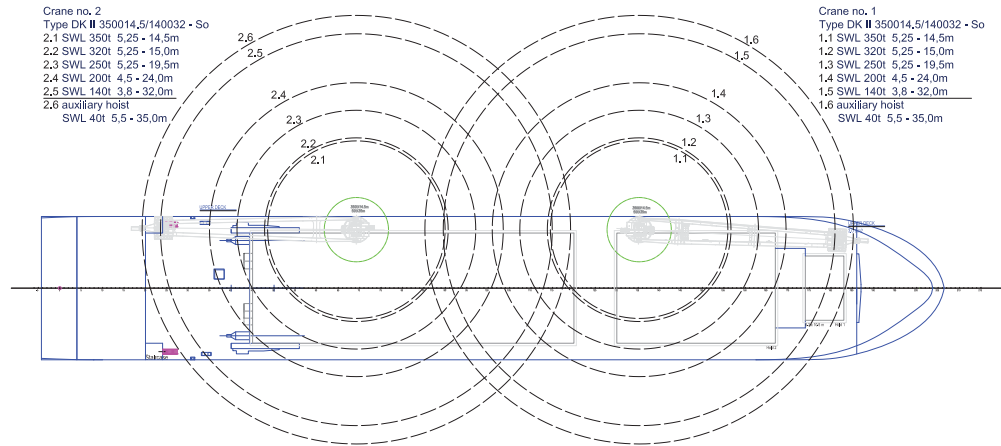
[www.aalshipping.com](http://www.aalshipping.com)

# S-CLASS VESSELS

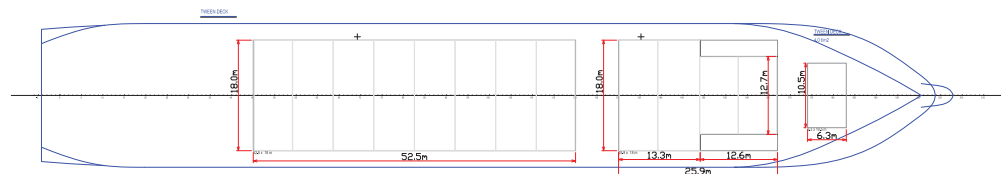
## SIDE VIEW



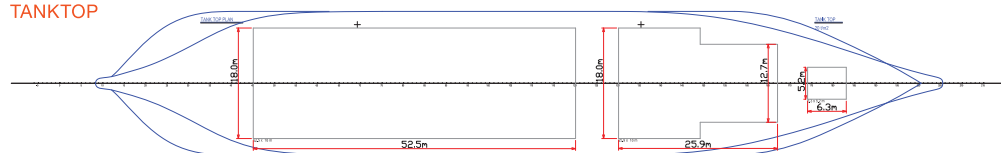
## WEATHER DECK



## TWEENDECK



## TANKTOP



powered by partnerships

These owned, best-in-class vessels have been designed and equipped to accommodate heavy lift and project cargo, alongside breakbulk and dry bulk. Their side mounted cranes have a combined lifting capacity of 700 mt – ideal for loading and stowing heavy and oversized project cargo. They further feature long and highly flexible cargo holds, equipped with adjustable tween-decks and strengthened tank tops.



All vessel details are provided in good faith at time of printing, but are subject to change. Please check with your AAL Representative, or visit [www.aalshipping.com](http://www.aalshipping.com), for all latest updates.

AAL Headquarters:  
Singapore  
T: (65) 6248 3600  
E: [sales.sg@aalshipping.com](mailto:sales.sg@aalshipping.com)  
For a complete listing of current AAL offices and associates around the world, visit [www.aalshipping.com](http://www.aalshipping.com)