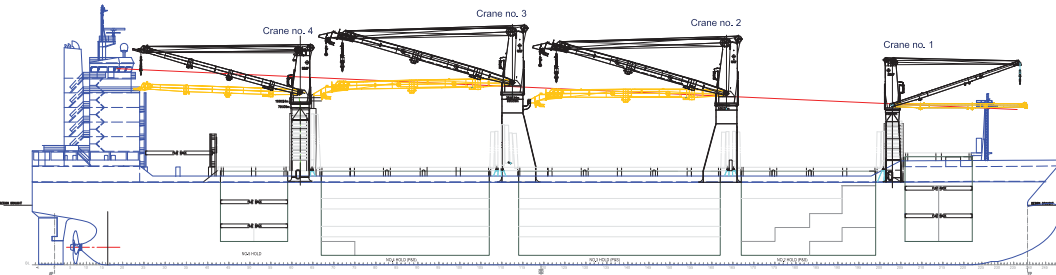
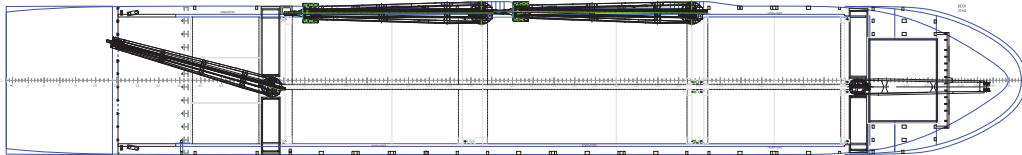


All vessel details are provided in good faith at time of printing, but are subject to change. Please check with your AAL Representative, or visit our website for all latest updates.

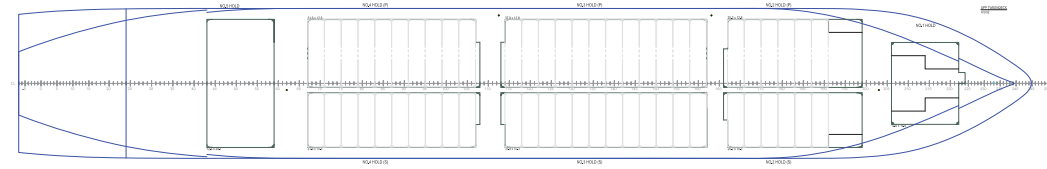
SIDE VIEW



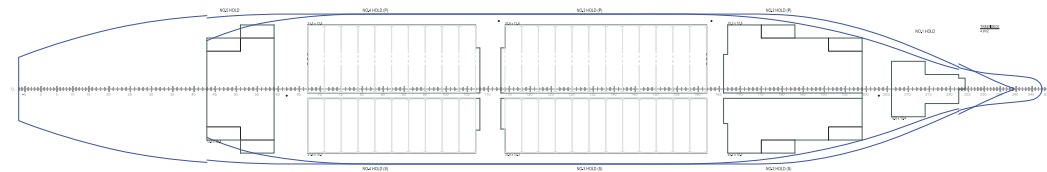
WEATHER DECK



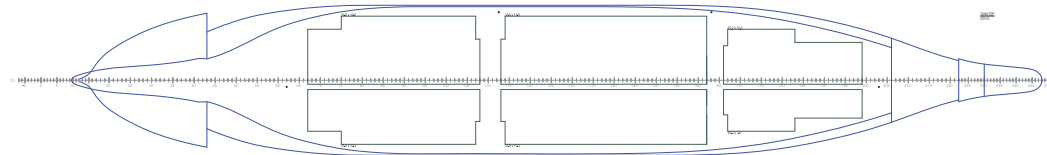
UPPER TWEENDECK



LOWER TWEENDECK



TANK TOP



AAL Australia
T: +61 7 3332 8555
E: sales.au@aalshipping.com

AAL Canada
T: +1 778 227 4610
E: sales.ca@aalshipping.com

AAL China
T: +86 21 6135 9600
E: sales.cn@aalshipping.com

AAL Europe
T: +49 40 361 304 810 / 820
E: sales.eu@aalshipping.com

AAL Japan
T: +81 3 5579 9709
E: sales.jp@aalshipping.com

AAL Korea
T: +82 2 6388 7870
E: sales.kr@aalshipping.com

AAL Middle East
T: +97 1 4 450 47 00
E: sales.me@aalshipping.com

AAL USA
T: +1 713 980 1100
E: sales.us@aalshipping.com

AAL Headquarters
Singapore
T: +65 6248 3600
sales.sg@aalshipping.com
www.aalshipping.com



powered by partnerships

A-CLASS VESSELS

Type	Multipurpose/ Heavy Lift Carrier/ Strengthened for Bulk	Cargo Capacity (Grain/Bale)	No. 1: 2,135.70 cbm No. 2P: 4,581.30 cbm / No. 2S: 3,572.20 cbm No. 3P: 7,727.20 cbm / No. 3S: 6,218.20 cbm No. 4P: 6,398.70 cbm / No. 4S: 5,141.00 cbm No. 5: 3,732.40 cbm	Main Engine	Wartsila 7RT Flex 50 MCR 11,620kW at 124 RPM CSR 10,458kW at 119.7 RPM
Class	Germanischer Lloyd + 100 A5 E, Multi-Purpose Dry Cargo Ship, G, Equipped for Carriage of Containers, Strengthened for Heavy Cargoes, NAV-O, IW, SOLAS II-2 Reg.19, BWMP(F), EP, +MC E AUT	Total	39,509.40 cbm	Auxiliary Engines (3 Sets)	Wartsila Auxpac 975W6L62 975kW at 900 RPM
Deadweight	Fitted for Panama, Suez, Australia, US Coast Guard 31,000 t	Floor Space	Tank Top: 2,315 m ² Tweendeck: 3,649 m ² + Additional 873 m ² of 20/40FT F/L Decks Weather Deck: 2,988 m ²	Bow Thruster Rated Power	1,100kW
GT/NT	24,025 / 10,570	Max Permissible Load	Weather Deck Hatch Covers: 3.00 t/m ² Tweendeck Hatch Covers: 4.00 t/m ² Tank Top: 22.00 t/m ²	Anti-Heeling System	The vessel is equipped with anti-heeling tanks, with an automatic system fully monitored and controlled from the cargo office.
LOA	193.90 m	Container Capacity (Total TEU)	2,014 TEU	Dehumidifiers / Ventilation	Three independent dehumidifiers serve cargo holds No. 2, 3 and 4 (port and starboard) for the safe transportation of sensitive steel/paper and other products. Ventilation of cargo holds in accordance with requirements for carriage of dangerous cargo.
LBP	183.00 m	Container Capacity (Total FEU)	922 FEU + 170 TEU	Dangerous Cargo	Class 1-9 (excluding 5.2) can be loaded in hold No. 2, in packaged form. Class 1.4(S), 2-9 (excluding 5.2) can be loaded in Holds No. 1, No. 3 and No. 4 in packaged form. Class 1-9 (excluding 5.2) can be loaded on upper deck/ hatch covers (except above E/R) in packaged form. Class 4.1, 4.2, 4.3, 5.1, 6.1(D), 8(D) and 9 can be loaded in bulk in holds No.2, No. 3 and No. 4
Breadth (Moulded)	28.20 m	Reefer Containers	145 Reefer Points on Deck with Reefer Monitoring System in Cargo Office	Smoke Detection / Fire Fighting	All cargo holds are equipped with a fire detection system and a CO2 fire extinguishing system. Cargo hold No. 2 (dangerous goods) is additionally equipped with a sprinkler fire extinguishing system.
Depth (Moulded)	15.60 m	Cargo Gear	Crane 1 (Centre): 50 t at 24.00 m Crane 2 & 3 (Port Side): 350 t at 14.00 m each Crane 4 (Centre): 100 t at 24.00 m		
Draft (Summer)	11.20 m	Maximum Lift	Combined 700 t (Crane 2 & 3)		
Holds	5				
Hatches	8				
Tweendecks	Complete Tweendeck levels for holds 3 & 4 / flexible positions				
Hatch Dimensions (L x B)	No. 1: 12.64 x 15.40 m No. 2P: 25.28 x 12.80 m / No. 2S: 25.28 x 10.30 m No. 3P: 37.92 x 12.80 m / No. 3S: 37.92 x 10.30 m No. 4P: 31.60 x 12.80 m / No. 3S: 31.60 x 10.30 m No. 5: 12.64 x 24.10 m				

VESSEL NAME	AAL BRISBANE	AAL DALIAN	AAL HONG KONG	AAL KEMBLA	AAL KOBE	AAL MELBOURNE	AAL NEWCASTLE	AAL PUSAN	AAL SHANGHAI	AAL SINGAPORE
YEAR BUILT	2010	2013	2013	2011	2012	2013	2014	2012	2012	2011
IMO NO.	9498341	9498470	9498468	9498353	9498444	9498456	9498482	9498389	9498377	9498365
CALL SIGN	V7UR9	V7CO2	V7BD5	V7WC7	V7ZF3	V7ZY6	V7DW4	V7YO8	V7XW6	V7XB6
FLAG	LIBERIA	LIBERIA	CYPRUS	LIBERIA	LIBERIA	LIBERIA	LIBERIA	LIBERIA	CYPRUS	LIBERIA

Our owned second-generation A-Class heavy lift vessels accommodate all cargo types with a market leading intake of 40,000 cbm. A few highlights include: a 700 t max lift capability; five large cargo holds; 2 tweendecks and a weather deck floor space of 2,700 m² – making it one of the finest, youngest and most popular vessel classes in the global MPV fleet.



www.aalshipping.com | www.aalshipping.com.cn



WeChat ID: **AALSHIPPING**
新加坡澳亚航运有限公司上海代表处



powered by partnerships