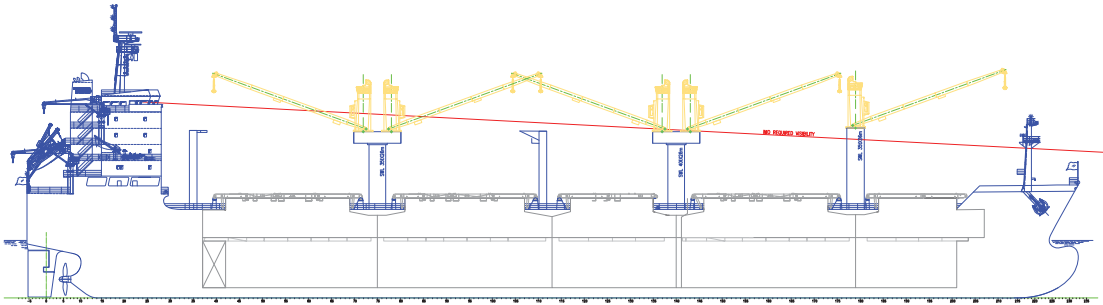


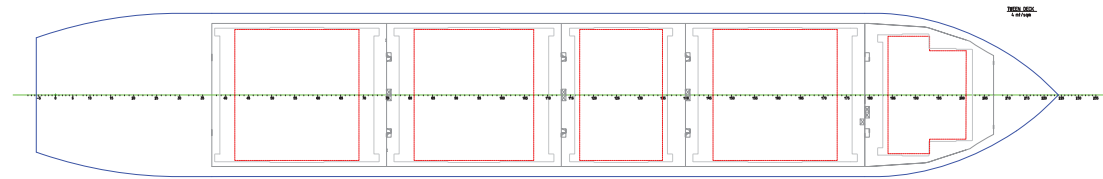
M-CLASS VESSELS

All vessel details are provided in good faith at time of printing, but are subject to change. Please check with your AAL Representative, or visit our website for all latest updates.

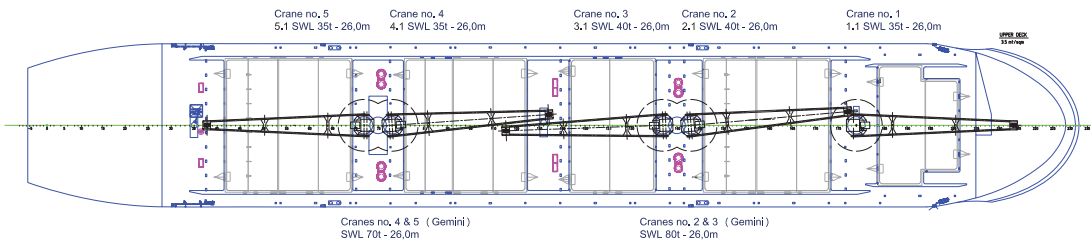
SIDE VIEW



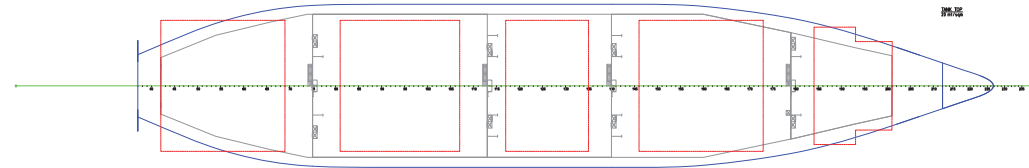
TWEENDECK



WEATHER DECK



TANK TOP



AAL Australia
T: +61 7 3332 8555
E: sales.au@aalshipping.com

AAL Canada
T: +1 778 227 4610
E: sales.ca@aalshipping.com

AAL China
T: +86 21 6135 9600
E: sales.cn@aalshipping.com

AAL Europe
T: +49 40 361 304 810 / 820
E: sales.eu@aalshipping.com

AAL Japan
T: +81 3 5579 9709
E: sales.jp@aalshipping.com

AAL Korea
T: +82 2 6388 7870
E: sales.kr@aalshipping.com

AAL Middle East
T: +97 1 4 450 47 00
E: sales.me@aalshipping.com

AAL USA
T: +1 713 980 1100
E: sales.us@aalshipping.com

AAL Headquarters
Singapore
T: +65 6248 3600
sales.sg@aalshipping.com
www.aalshipping.com



powered by partnerships

M-CLASS VESSELS

Type	Multi-purpose Tweendecker with retractable tweendecks	Hatch Dimensions (L x B)	Hydraulic Folding Type No. 1: 13.60 x 15.40 m No. 2: 21.60 x 22.80 m No. 3: 14.40 x 22.80 m No. 4: 20.80 x 22.80 m No. 5: 21.60 x 22.80 m	Cargo Gear	1 x 35 t crane, centre 2 x 40 t cranes, centre Combinable up to 80 t swl (gemini) 2 x 35 t cranes, centre Combinable up to 70 t swl (gemini) Max hoisting height: 14 m
Class	Lloyds Register, 100A1, Strengthened for Heavy Cargoes, Multi-purpose Dry Cargo Ship, Container Cargoes on Tweendeck and on Upper Deck and All Hatch Covers, IWS, LI, LMC, UMS, Able to Operate as Single Decker	Cargo Capacity (Grain/Bale)	Hold 1: 4,725 / 4,347 m ³ Hold 2: 9,994 / 9,194 m ³ Hold 3: 6,877 / 6,327 m ³ Hold 4: 9,779 / 8,997 m ³ Hold 5: 8,829 / 8,123 m ³	Maximum Lift	Combined 80 t (Crane 2 & 3)
Deadweight	(Summer) 34,005.50 t on 10.913 m	Total	40,205 / 36,989 m ³ bss tweendecks in upper open position	Main Engine	Up to 14.0kn max service speed STX Max B&W / 6S50MC-CT 9480 kW
GT/NT	International 22998.00 / 12316.00 Panama *0.00 / 19.825.00 Suez *24368.13 / 21.012.35 *Suez and Panama GT/NT are subject to canal authority revision at any time and are not the responsibility of the owner.	Floor Space	5,757m ² under deck 2,660m ² on deck	Bow Thruster Rated Power	850 kW
LOA	182.90 m	Max Permissible Load	Tank Top: 20.00 t/m ² Tween Deck: 4.00 t/m ² Weather Deck: 3.50 t/m ²	Cargo Hold	Hold 2+3+4 (lower hold): box-shaped Hold 2+3+4+5 (tweendeck): box-shaped
LBP	174.50 m	Container Capacity (Total TEU)	953 TEU	Tank Capacity	IFO: 863 m ³ (85%) MDO: 156 m ³ (85%) Ballast: 9,741 m ³ Fresh Water: 239 m ³
Breadth (Moulded)	28.40 m	Container Capacity (Total FEU)	370 FEU	Ventilation	All holds mechanically ventilated Intake: natural Exhaust: mechanical Air changes/hr: 6.00 CO ₂ in holds: yes
Depth (Moulded)	15.30 m	Reefer Containers	100 Reefer Containers Points on Deck	Smoke Detection / Fire Fighting	All cargo holds are equipped with a fire detection system and a CO ₂ fire extinguishing system.
Draft (Summer)	9.80 m				
Holds	5				
Hatches	5				
Tweendecks	1				

VESSEL NAME	PORTHOS
YEAR BUILT	2009
IMO NO.	9438389
CALL SIGN	3FKD5
FLAG	PANAMA



With a cargo intake of over 40,000 cbm and featuring five large hatch-covered holds, tweendecks and large weather deck space, this adaptive vessel class provides an ideal solution for dry bulk commodities, breakbulk and project cargo.



www.aalshipping.com | www.aalshipping.com.cn



WeChat ID: **AALSHIPPING**
新加坡澳亚航运有限公司上海代表处



powered by partnerships