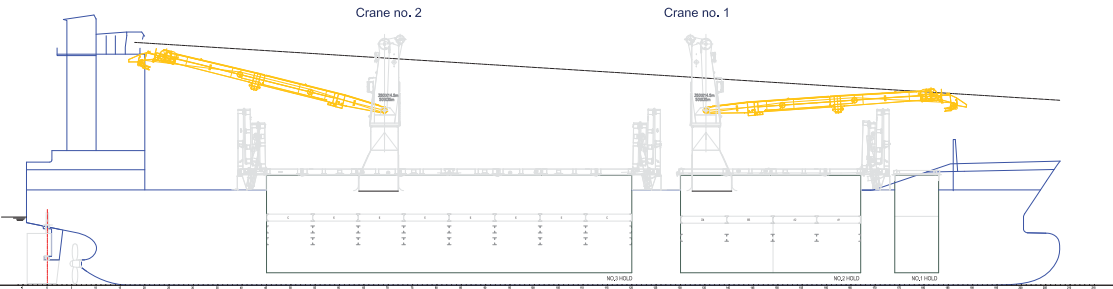


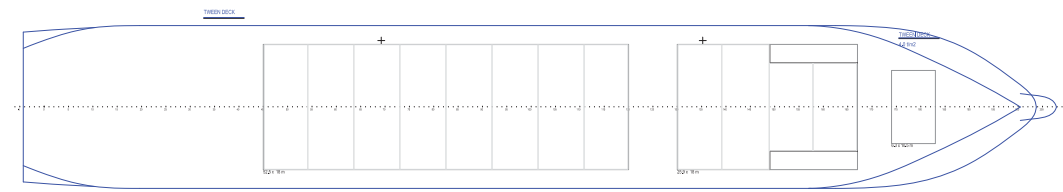
S-CLASS VESSELS

All vessel details are provided in good faith at time of printing, but are subject to change.
Please check with your AAL Representative, or visit our website for all latest updates.

SIDE VIEW



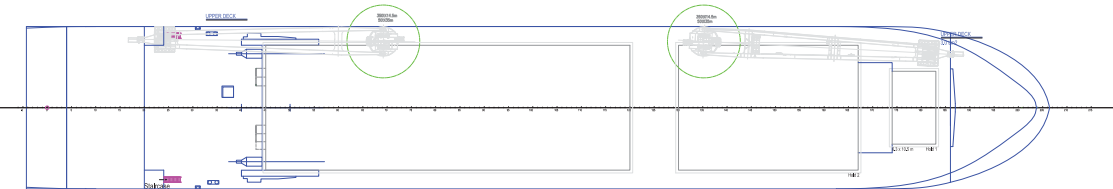
TWEENDECK



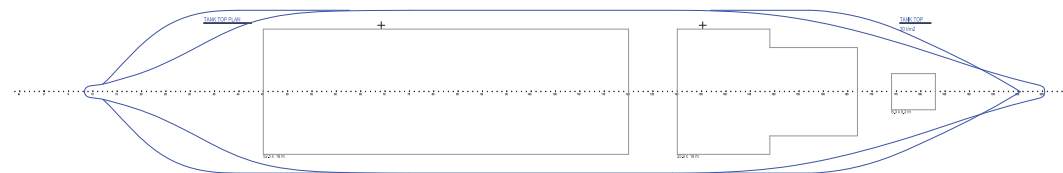
WEATHER DECK

Crane no. 2
2,1 SWL 350t
2,2 SWL 320t
2,3 SWL 250t
2,4 SWL 200t
2,5 SWL 140t
2,6 auxiliary hoist
SWL 40t

Crane no. 1
1,1 SWL 350t
1,2 SWL 320t
1,3 SWL 250t
1,4 SWL 200t
1,5 SWL 140t
1,6 auxiliary hoist
SWL 40t



TANK TOP



AAL Australia
T: +61 3 3332 8555
E: sales.au@aalshipping.com

AAL Canada
T: +1 778 227 4610
E: sales.ca@aalshipping.com

AAL China
T: +86 21 6135 9600
E: sales.cn@aalshipping.com

AAL Europe
T: +49 40 361 304 810 / 820
E: sales.eu@aalshipping.com

AAL Japan
T: +81 3 5579 9709
E: sales.jp@aalshipping.com

AAL Korea
T: +82 2 6388 7870
E: sales.kr@aalshipping.com

AAL Middle East
T: +97 1 4 450 47 00
E: sales.me@aalshipping.com

AAL USA
T: +1 713 980 1100
E: sales.us@aalshipping.com

AAL Headquarters
Singapore
T: +65 6248 3600
sales.sg@aalshipping.com
www.aalshipping.com



powered by partnerships

S-CLASS VESSELS

Type	Multipurpose/Heavy Lift Carrier/Strengthened for Bulk	Cargo Capacity (Grain/Bale)	No. 1: 662.60 cbm No. 2: 6,032.10 cbm No. 3: 13,321.40 cbm	Bow Thruster Rated Power	700 kW
Class	Germanischer Lloyd + 100 A5, Multipurpose Dry Cargo Ship, Equipped for Carriage of Containers, Strengthened for Heavy Cargo, G, NAV-O, IW, DG, BWM, EP, DBC, + MC E AUT	Total	20,016.10 cbm	Anti-Heeling System	The vessel is equipped with anti-heeling tanks, with an automatic system fully monitored and controlled from the wheelhouse, cargo office and the ECR.
	Fitted for Panama, Suez, Australia, US Coast Guard	Floor Space	Tank Top: 1,377 m ² Tween Deck: 1,411 m ² + Additional 66 m ² of 20FT F/L Deck Weather Deck: 1,584 m ²	Dehumidifiers / Ventilation	Ventilation of holds is in accordance with requirements for carriage of dangerous cargo.
Deadweight	18,762 t	Max Permissible Load	Weather Deck Hatch Covers: 3.00 t/m ² Tween Deck Hatch Covers: 4.00 t/m ² Tank Top: 22.00 t/m ²	Dangerous Cargo	In No. 1 Cargo Hold: Class 1.1 ~ 1.6, 1.4(S), 2, 3, 4.1, 4.2, 4.3, 5.1, 6.1, 8, 9 in package form. Class 4.1, 4.2, 5.1, 6.1, 7, 8, 9 in solid bulk form.
GT/NT	14,053 / 5,373	Container Capacity (Total TEU)	969 TEU		
LOA	148.50 m	Container Capacity (Total FEU)	461 FEU + 46 TEU		
LBP	140.30 m	Reefer Containers	50 Reefer Points on Deck with Reefer Monitoring System in Cargo Office		
Breadth (Moulded)	23.40 m	Cargo Gear	Crane 1 & 2 (Port Side): 350 t at 14.50 m / 140 t at 32.00 m		
Depth (Moulded)	13.50 m	Maximum Lift	Combined 700 t (Crane 1 & 2)		
Draft (Summer)	9.80 m	Main Engine	Wartsila 6RTA 48-B MCR: 8,730 kW at 127 RPM CSR: 7,857 kW at 122.6 RPM	Smoke Detection / Fire Fighting	All cargo holds are equipped with a fire detection and a CO2 fire extinguishing system. Cargo hold No. 1 is additionally equipped with a sprinkler fire extinguishing system.
Holds	3	Auxiliary Engines (3 Sets)	MAN Hyundai 5L23/30H 645 kW at 720 RPM		
Hatches	3				
Tweendecks	1 Tweendeck - 3 Positions				
Hatch Dimensions (L x B)	No. 1: 6.30 x 10.50 m No. 2: 25.90 x 18.00 m No. 3: 52.50 x 18.00 m				

VESSEL NAME	AAL BANGKOK	AAL DAMPIER	AAL FREMANTLE	AAL NANJING
YEAR BUILT	2012	2011	2011	2012
IMO NO.	9521564	9521540	9521095	9521552
CALL SIGN	9V9014	9V9012	9V9011	9V9013
FLAG	LIBERIA	LIBERIA	LIBERIA	LIBERIA

Built and designed to go anywhere and with any cargo, this young (year build 2012) and owned class of heavy-lifters combines a 700 t max lift, with three large holds, flexible tweendeck and large open weather deck space. They serve our tramp and semi-liner services around the world, with optimum efficiency and performance.



www.aalshipping.com | www.aalshipping.com.cn



WeChat ID: **AALSHIPPING**
新加坡澳亚航运有限公司上海代表处



powered by partnerships