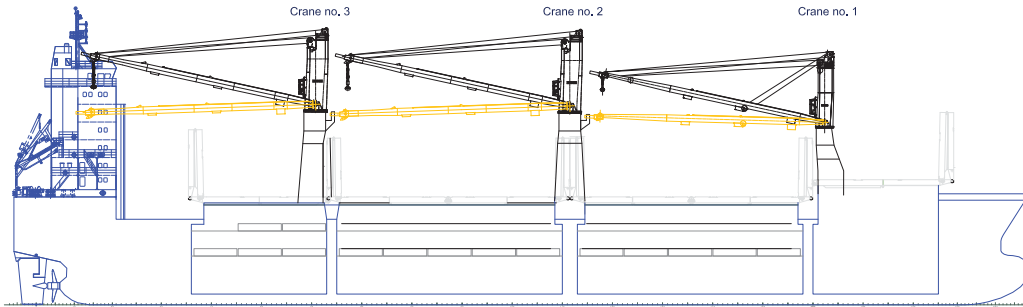


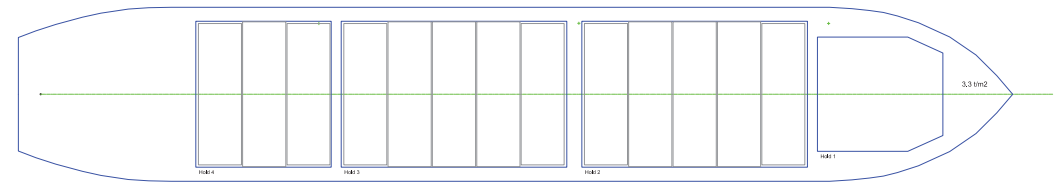
# G-CLASS VESSELS

All vessel details are provided in good faith at time of printing, but are subject to change. Please check with your AAL Representative, or visit our website for all latest updates.

## SIDE VIEW



## TWEENDECK

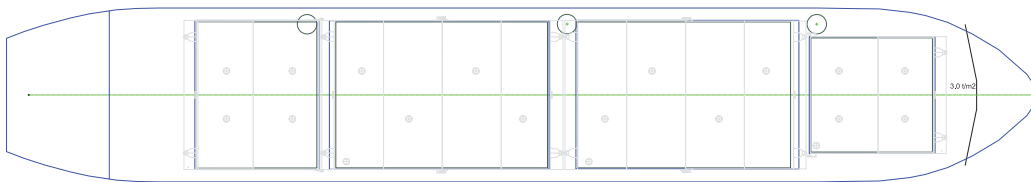


## WEATHER DECK

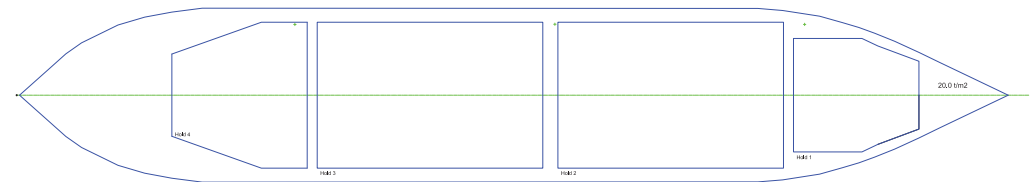
Crane no. 3  
3.1 SWL 120t  
3.2 SWL 100t  
3.3 SWL 80t  
3.4 SWL 70t  
3.5 SWL 60t  
3.6 SWL 45t

Crane no. 2  
2.1 SWL 120t  
2.2 SWL 100t  
2.3 SWL 80t  
2.4 SWL 70t  
2.5 SWL 60t  
2.6 SWL 45t

Crane no. 1  
1.1 SWL 45t  
1.2 SWL 40t



## TANK TOP



**AAL Australia**  
T: +61 7 3332 8555  
E: sales.au@aalshipping.com

**AAL Canada**  
T: +1 778 227 4610  
E: sales.ca@aalshipping.com

**AAL China**  
T: +86 21 6135 9600  
E: sales.cn@aalshipping.com

**AAL Europe**  
T: +49 40 361 304 810 / 820  
E: sales.eu@aalshipping.com

**AAL Japan**  
T: +81 3 5579 9709  
E: sales.jp@aalshipping.com

**AAL Korea**  
T: +82 2 6388 7870  
E: sales.kr@aalshipping.com

**AAL Middle East**  
T: +97 1 4 450 47 00  
E: sales.me@aalshipping.com

**AAL USA**  
T: +1 713 980 1100  
E: sales.us@aalshipping.com

**AAL Headquarters**  
Singapore  
T: +65 6248 3600  
sales.sg@aalshipping.com  
www.aalshipping.com



powered by partnerships

# G-CLASS VESSELS

<b>Type</b>	Multipurpose / Heavy Lift / Container Carrier	<b>Hatch Dimensions (L x B)</b>	No. 1: 18.96 x 18.00 m No. 2: 35.55 x 23.00 m No. 3: 35.55 x 23.00 m No. 4: 21.33 x 23.00 m	<b>Container Capacity (Total FEU)</b>	621 FEU + 59 TEU
<b>Class</b>	Carrier Germanischer Lloyd + 100 A5, E1, G, Equipped for Carriage of Containers, Strengthened for Heavy Cargo, IW, + MC E1 AUT	<b>Cargo Capacity (Grain/Bale)</b>	No. 1: 5,882 cbm No. 2: 11,589 cbm No. 3: 11,589 cbm No. 4: 6,645 cbm	<b>Reefer Containers</b>	100 Reefer Points
<b>Deadweight</b>	25,800 t	<b>Total</b>	35,706 cbm (excl. twd)	<b>Cargo Gear</b>	Crane 1: 45 t at 28.00 m Crane 2 & 3: 120 t at 14.80 m
<b>GT/NT</b>	19,128 / 9,736	<b>Floor Space</b>	Tank Top: 2,481 m <sup>2</sup> Tweendeck: 2,481 m <sup>2</sup> Weather Deck: 2,660 m <sup>2</sup>	<b>Maximum Lift</b>	Combinable up to 240 t SWL
<b>LOA</b>	159.99 m	<b>Max Permissible Load</b>	Weather Deck Hatch Covers: 3.00 t/m <sup>2</sup> Tweendeck Hatch Covers: 3.20 t/m <sup>2</sup> Tank Top: 20.00 t/m <sup>2</sup>	<b>Main Engine</b>	MAN B&W 6S40ME-B (fix pitch propeller)
<b>LBP</b>	152.00 m	<b>Container Capacity (Total TEU)</b>	1,620 TEU	<b>Auxiliary Engines (3 Sets)</b>	6,810kW at 146RPM Yanmar 6N18AL-EV 660kW at 900RPM
<b>Breadth (Moulded)</b>	27.40 m			<b>Bow Thruster</b>	Yes
<b>Depth (Moulded)</b>	13.50 m			<b>Dehumidifiers / Ventilation</b>	All holds mechanically ventilated / 6 air changes per hour
<b>Draft (Summer)</b>	9.80 m			<b>Dangerous Cargo</b>	SOLAS II-2 Reg. 19 Dangerous Goods cl. 1.4s, 2, 3, 4, 5.1, 6.1, 8, 9
<b>Holds</b>	4				
<b>Hatches</b>	4				
<b>Tweendecks</b>	1 Tweendeck				

VESSEL NAME	AAL GENOA	AAL GLADSTONE	PACIFIC ACTION
YEAR BUILT	2009	2009	2010
IMO NO.	9393553	9393541	9393565
CALL SIGN	5BVW2	5BRV2	5BXJ2
FLAG	CYPRUS	CYPRUS	CYPRUS



An extremely flexible heavy lift vessel class, with adaptable configurations to fit all cargo types and a maximum lift capacity of 480 t. These tween-deckers are less than 10 years old and feature four large hatch covered holds, a weather deck space of 700m<sup>2</sup> and cargo intake capacity of 36,000 cbm.



[www.aalshipping.com](http://www.aalshipping.com) | [www.aalshipping.com.cn](http://www.aalshipping.com.cn)



WeChat ID: **AALSHIPPING**  
新加坡澳亚航运有限公司上海代表处



powered by partnerships