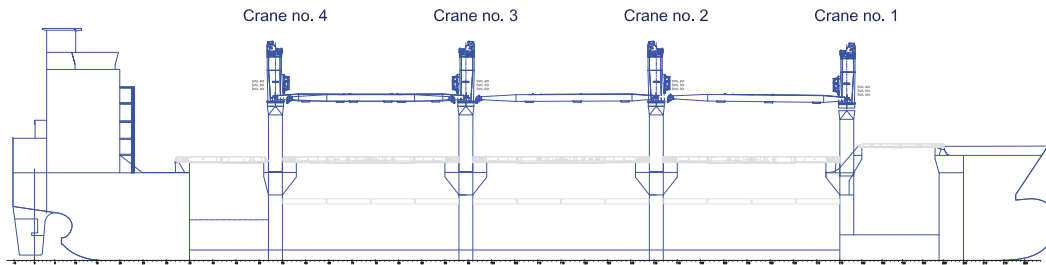


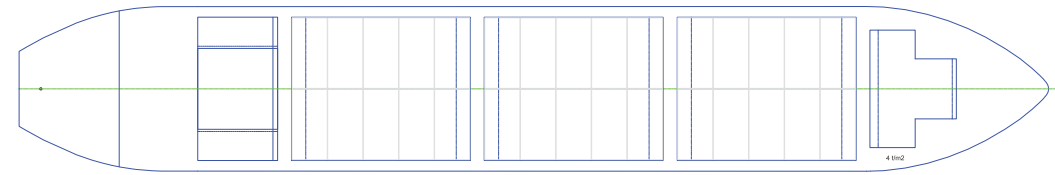
W-CLASS VESSELS

SIDE VIEW



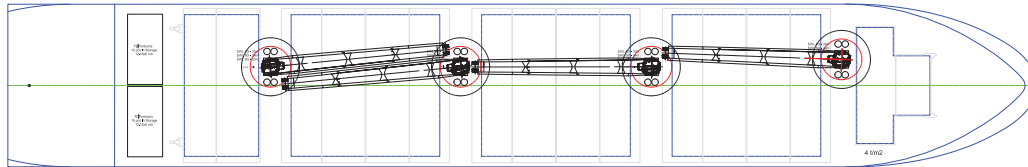
TWEENDECK

Intake is always subject to vessel's stability, trim, permissible weights and is subject to regulations of visibility. Lifting capacity of vessel's cranes is subject to vessel's stability and can depend on cargo/ballast on board. Container data as well as bale capacity assumes tweendeck ashore. The figures given herewith are for "reference" only and they must not be used as basis for Charter Parties or other contracts without AAL's explicit written authority. For more information on individual vessels within the AAL fleet, please commercial@aalshipping.com.

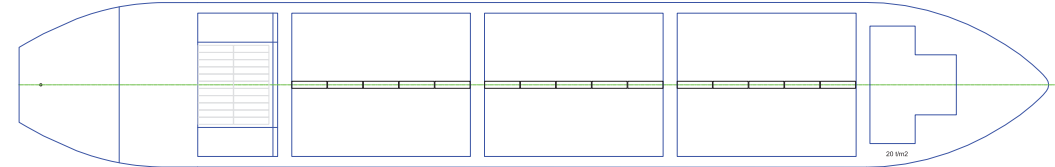


WEATHER DECK

Crane no. 1-4
 1 SWL 60t - 20m
 2 SWL 50t - 24m
 3 SWL 40t - 30m



TANK TOP



Oceania
 Brisbane, AU (Regional Hub)
 T: +61 7 3332 8555
 E: oceania@aalshipping.com

Americas
 Houston, US (Regional Hub)
 T: +1 713 980 1100
 E: americas@aalshipping.com

Asia
 Shanghai, CN
 T: +86 21 6135 9600
 E: china@aalshipping.com

Qingdao, CN
 T: +86 532 8575 3558
 E: china@aalshipping.com

Tokyo, JP
 T: +81 3 3541 9192
 E: japan@aalshipping.com

Europe
 Hamburg, DE (Regional Hub)
 T: +49 40 361 304 810 / 820
 E: europe@aalshipping.com

Genoa, IT
 T: +39 010 806 0836
 E: italy@aalshipping.com

Global Head Office
 Singapore, SG
 T: +65 6248 3600
 E: commercial@aalshipping.com

Middle East
 Dubai, AE (Regional Hub)
 T: +971 4 450 4700
 E: middleeast@aalshipping.com

Calgary, CA
 T: +1 778 227 4610
 E: americas@aalshipping.com

Beijing, CN
 T: +86 10 8447 5255
 E: china@aalshipping.com

Tianjin, CN
 T: +86 22 2319 3785
 E: china@aalshipping.com

Seoul, KR
 T: +82 2 6388 7870
 E: korea@aalshipping.com

Porvoo, FI
 T: +358 40 827 7031
 E: finland@aalshipping.com

Paris, FR (Africa Enquiries)
 T: +33 1 4071 8512
 E: africa@aalshipping.com

W-CLASS VESSELS

Type	Multipurpose Dry Cargo Ship			
Class	DNV-GL 100 A5; BMW; Equipped for Carriage of Containers; DBC SOLAS-II-2, Reg. 19 G IW NAV-0, Strengthened for heavy cargo, MC, AUT EP-D			
Deadweight	33,217 t (without Tweendecks) 32,387 t (with Tweendecks)			
GT/NT	22,863 / 10,602			
LOA	179.50 m			
LBP	169.00 m			
Breadth (Moulded)	28.00 m			
Depth (Moulded)	15.10 m			
Draft (Summer)	10.80 m			
Holds	5			
Hatches	5			
Tweendecks	3			
Cargo Hold Dimensions	Hold	Capacity w/o TWD (m³)	Capacity with TWD in Lower Position (m³)	
			Hatch Size (L X B)	
	1	3.242	3.242	12.6m x 20.04m/10.19m
	2	10.551	9.711	25.6m x 24.4m
	3	10.551	9.711	25.6m x 24.4m
	4	10.551	9.711	25.6m x 24.4m
	5	4.147	4.147	12.8m x 24.4m
	Total	39.042	36.522	(Tweendeck in holds 2/3/4)

Floor Space	Hold	Area (sqm)	Bottom Size (L x B)
	1	227	7.8/6.9m x 20.1/10.2m
	2	742	30.4m x 24.4m
	3	742	30.4m x 24.4m
	4	742	30.4m x 24.4m
	5	197 + 135 (monkey rocks)	13.6m x 14.5m (24.4m)
	Total	2650 + 135 (MR)	= 2,785 tank top area total

Clear height in Hold	14.86 m	
Co2 - fitted	Hold 1, 2, 3, 4, 5; Sprinkler system in hold 1	
Hatch	Hydraulic folding type hatchcovers covers Always one panel folding upright forward and aft	
Hold	Area (sqm)	Hatch Cover Sizes (L X B)
Hold 1	206	6.9/6.1 m x 20.5/10.6 m
Hold 2-4	2067	29.1 m x 26.5 m (each)
Hold 5	352	13.3 m x 26.5 m
Total	2,625	

Holds Capacity/ Volume (100%)	36522 cbm Tweendecks installed / 39042 cbm Tweendecks stowed on deck
Total	40,526m³

Max Permissible Load	Weather deck: 4.0 t/m² Tank top: 20.0 t/m² Tweendecks: 4.0 t/m²
Jump Loads	Hold 3+5 or 1+3 or 2+4 or 1+3+5 can be empty while remaining ones are loaded
Container Capacity	Container Capacity (total FEU): 210 FEU on deck, 307 FEU in holds
Reefer Containers	30 Reefer Points on Deck
Cargo Gear	Crane No. 1 - 4: SWL 60t / 20m; 50t / 24m; 40t / 30m
Crane Capacity	4 electro hydraulic single deck crane; SWL = 60t
Maximum Lift	
Main Engine	STX-MAN B&W 6S50MC-C7; MCR 8800 kW / 11440 HP @ 127 RPM; CSR 5,400 kW @ 110 (86% of MCR)
Auxillary Engines	3 x STX, 2 x 510kW, 1 x 425kW
Ventilation	Dual Fans in Holds no. 1-4, 6 changes per hour; Single Fan in Holds no. 5, 7 changes per hour
Dangerous Cargo	in line with IMDG code and vessels certificates
Smoke Detection / Firefighting	Carbon Dioxide in Holds No. 1 to 5; Hold 1 additional sprinkler system
Timber Fitted	Vessel fitted with stanchion pockets and lashing points. No slings/stanchions or lashing materials
Other	Australia, Suez, Panama fitted Vessel suitable for grab discharge Vessel has traverse beam on board Vessel has no bowthruster