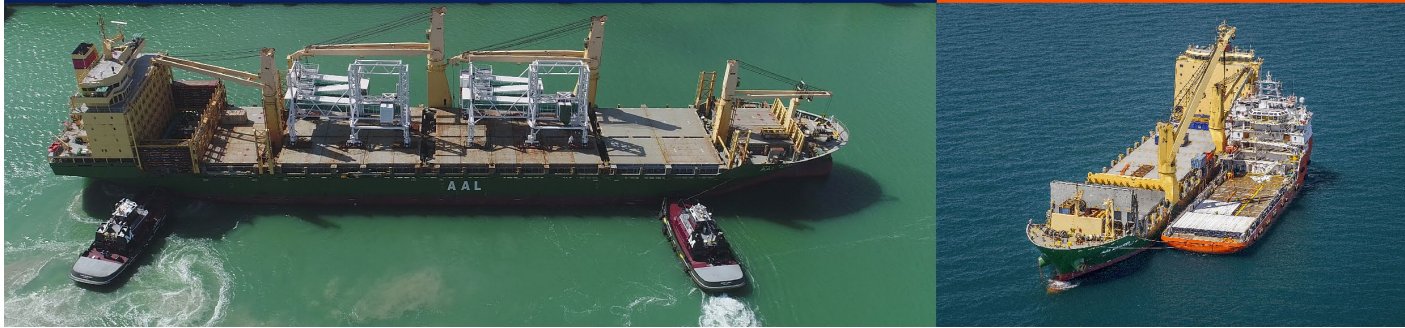


Your specialist in heavy lift,  
breakbulk and project cargo

# FLEET LIST



	CLASS	VESSEL NAME	BUILT	DWT	LIFT CAPACITY (MT)
1	A-Class	AAL Newcastle	2014	31,000	700
2		AAL Dalian	2013		
3		AAL Hong Kong			
4		AAL Melbourne			
5		AAL Kobe			
6		AAL Pusan	2012		
7		AAL Shanghai	2011		
8		AAL Kembla			
9		AAL Singapore			
10		AAL Brisbane	2010		
11	S-Class	AAL Bangkok	2012	19,000	700
12		AAL Nanjing	2011		
13		AAL Dampier			
14		AAL Fremantle			
15	W-Class	AAL Jupiter	2011	33,000	120
16		Paris Trader			
17		Madrid Trader			
18		Warnow Mars			
19		AAL Merkur	2010		
20		AAL Moon			
21		Berlin Trader			
22		Oslo Trader			
23	Rome Trader	2010			
24	AAL Genoa				
25	Pacific Alert	2009			
TOTAL		25 Vessels		734,600	

**Global Head Office**  
Singapore, SG  
T: +65 6248 3600  
E: commercial@aalshipping.com

**Oceania**  
Brisbane, AU (Regional Hub)  
T: +61 7 3332 8555  
E: oceania@aalshipping.com

**Americas**  
Houston, US (Regional Hub)  
T: +1 713 980 1100  
E: americas@aalshipping.com

**Middle East**  
Dubai, AE (Regional Hub)  
T: +971 4 450 4700  
E: middleeast@aalshipping.com

**Asia**  
Shanghai, CN  
T: +86 21 6135 9600  
E: china@aalshipping.com

Beijing, CN  
T: +86 10 8447 5255  
E: china@aalshipping.com

Qingdao, CN  
T: +86 532 8575 3558  
E: china@aalshipping.com

Tokyo, JP  
T: +81 3 3541 9192  
E: japan@aalshipping.com

Seoul, KR  
T: +82 2 6388 7870  
E: korea@aalshipping.com

**Europe**  
Hamburg, DE (Regional Hub)  
T: +49 40 361 304 810 / 820  
E: europe@aalshipping.com

Porvoo, FI  
T: +358 40 827 7031  
E: finland@aalshipping.com

Paris, FR (Africa Enquiries)  
T: +33 1 4071 8512  
E: africa@aalshipping.com



powered by partnerships